

Real Time Operations Centre (RTOC)



RTOC Overview

- **What is an RTOC?**
 - A centralized technology hub that aggregates and analyzes live data to deliver real-time situational awareness 24x7x365
- **Core Purpose**
 - Provide commanders a common operating picture to accelerate decision-making across all active operations
- **Key Functions**
 - Live monitoring of CCTV, drone & helicopter video feeds, and Automatic Licenses Plate Recognition (ALPR)
 - Intelligence fusion across Computer Aided Dispatch, records management, and partner agency databases and access to information
 - Coordination hub for critical incidents and major events



RTOC Live Feeds & Operational Inputs

Primary Data Feeds / Inputs

- CCTV / Traffic Cameras
- Drone & Helicopter Video
- ALPR (Hits, Hotlists, History)
- CAD / Calls for Service
- Radio / Talkgroup Status
- In-Car & Body-Worn Video
- Alarms / Sensor Alerts (Utilities)
- Partner Agency Feeds (Region/Municipal)
- Intel / BOLOs / Watchlists
- Mapping / Analytics / Dashboards



RTOC Video Wall Display

CCTV Input
Key intersections / hotspots
LIVE | 00:00:00

ICCS/BWC/Drone Live
Overwatch / search / perimeter
LIVE | 00:00:00

ALPR Alerts
Hits • nearest units • route
LIVE | 00:00:00

Live TV Feed
BREAKING NEWS
LIVE | 00:00:00

CAD Queue
Priority calls • units • ETA
LIVE | 00:00:00

Map / GIS
Incidents • cameras • units
LIVE | 00:00:00

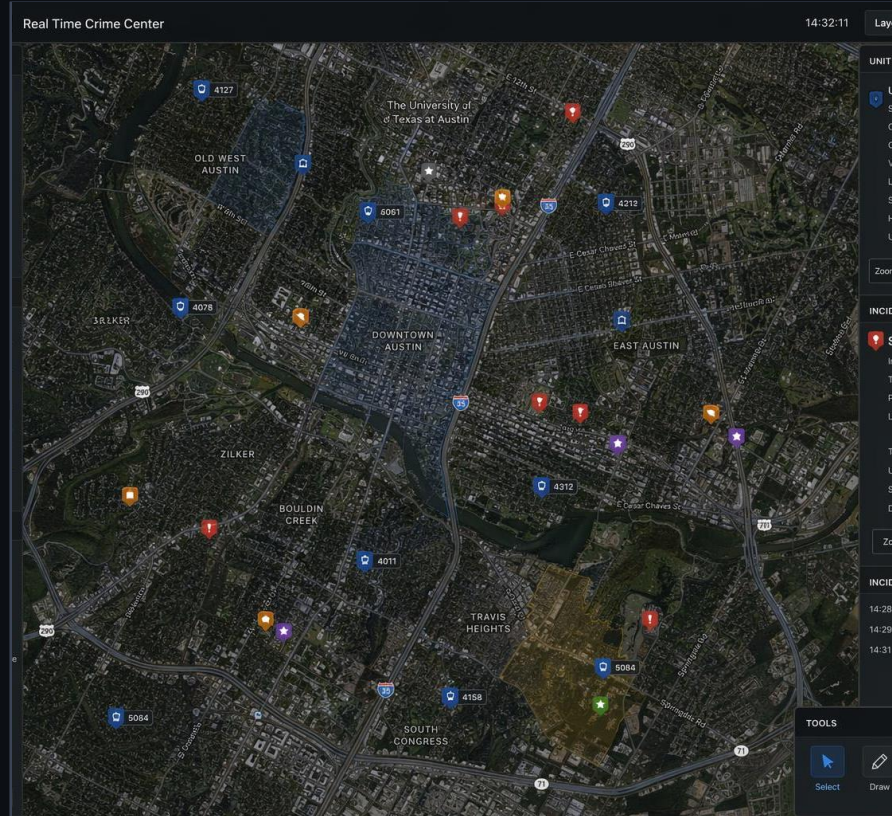
Intel / BOLO
Persons/vehicles of interest

Analytics Data
Crime hot spots



RTOC Situational Awareness

Map / GIS Data

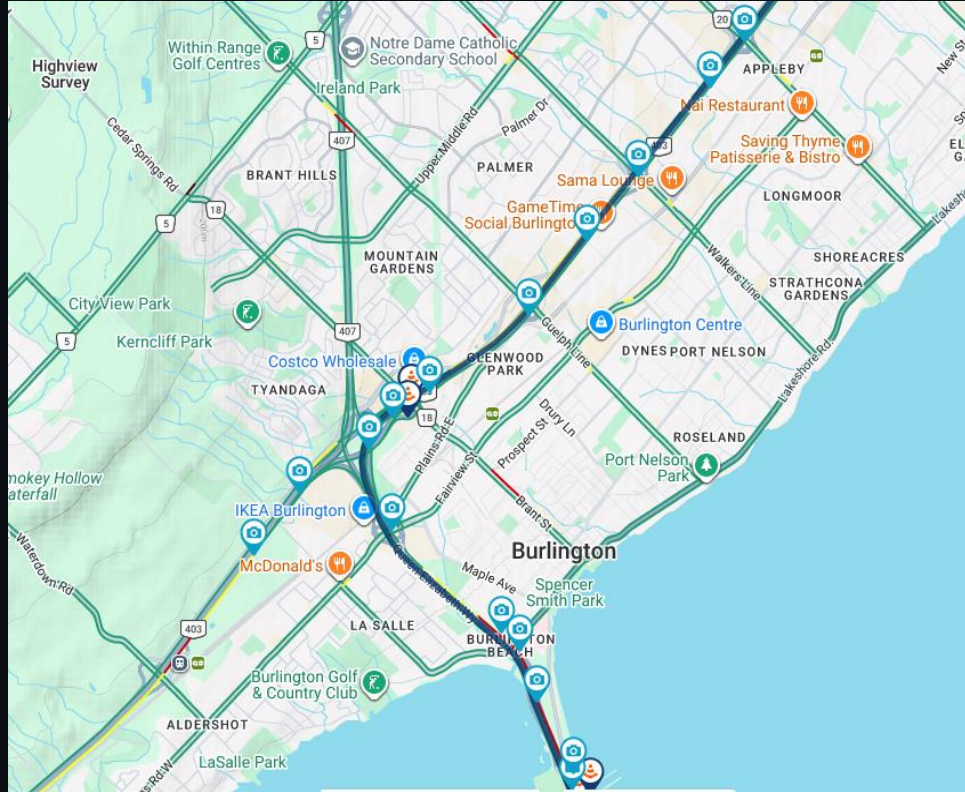


Analytics Data



RTOC Closed Circuit Television

CCTV Input



RTOC Drone/Helicopter Video



RTOC Automatic License Plate Recognition



IXQ 5678



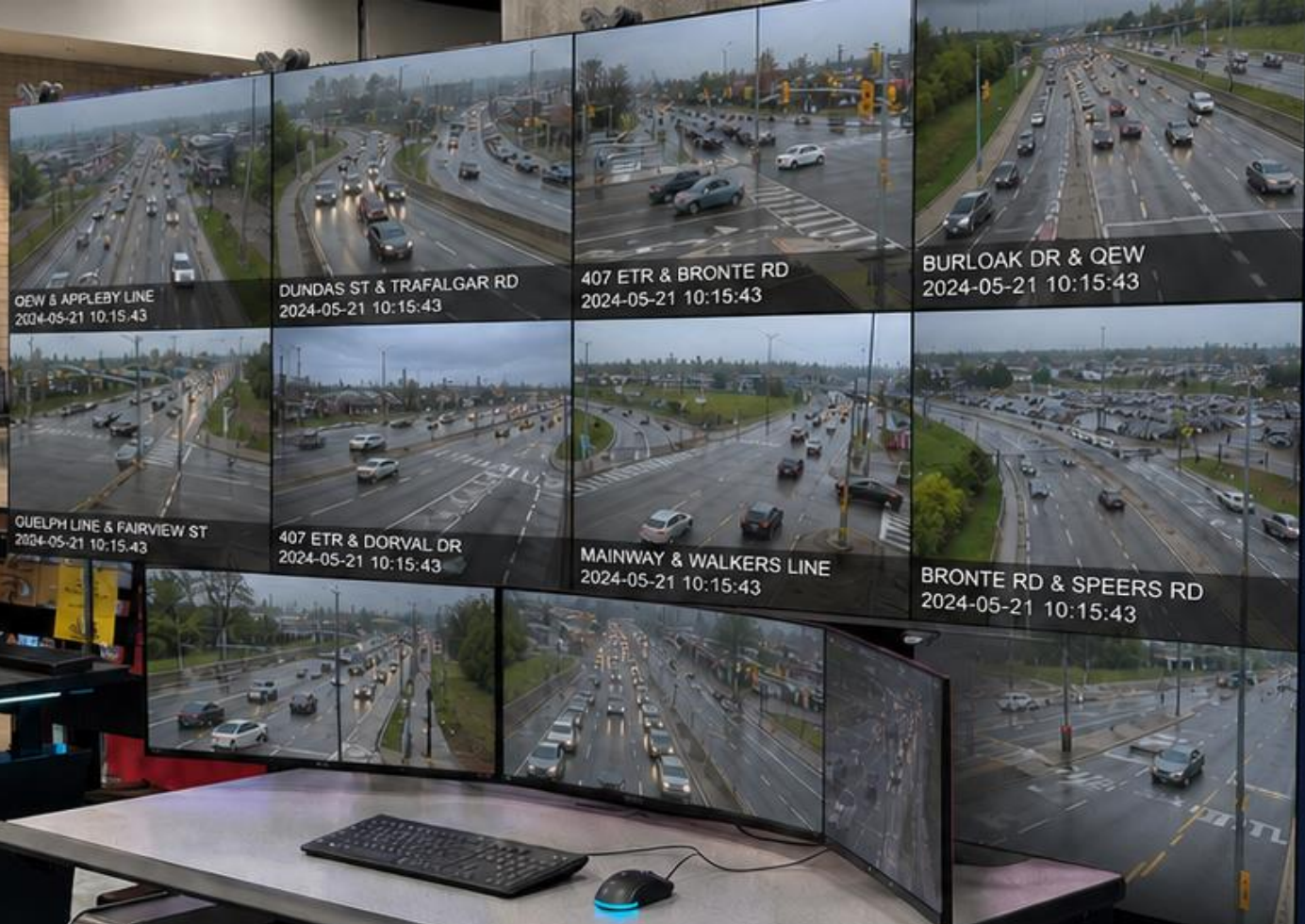
ALERT: Quebec Plate. IXQ 5678

▶ Stolen Vehicle

⚠ WANTED HIT



Life Insurance
CAL 500
1,000
ANYTIME



Integral role of staff in the RTOC

- Initially the RTOC would be staffed by a Uniform Sgt to make operational decisions on behalf of the Duty officer. They would work collaboratively with the Communications Supervisor and Command Staff to respond in real time to ongoing calls for service. It also allows the Sgt to allocate resources throughout the region.
- Depending on the type of events occurring in the region, this room could transform into a Command Centre with members of Senior Command.



The RTOC could also transform into an EOC, if required, to accommodate our partner agencies such as Fire, EMS, OPP, and Regional/Municipal Emergency personnel during major critical incidents, weather event's or disaster response operations.

The screenshot displays a mobile dashboard with several key sections:

- Stay Safe:** A top section with a blue header and a graphic of houses and a sun over water. Text reads: "It only takes one foot of water to carry away a small car."
- WARNING:** A dark banner with a "New Alarm" icon and text: "Dangerous Road Flooding alarm added by Bushdale Transportation." Below it, a "Road Flooding" section shows a water icon, the number "19", and "Major Roads since 8:00 am".
- Power Outages:** A pink section with a power plug icon, the number "25", and "Scottsford County Population Affected".
- TRAFFIC:** A section titled "Showing: Multiple O..." with a list of incidents:
 - Badge Reader:** Conference Center - Entrance, Scottsford Public Works.
 - License Reader:** License Reader - Intersection 3 - Facing W..., Bushdale Transportation Department.
 - Road Block:** 105 Beckhaven Ave., Bushdale Police Department.
 - Road Block:** 302 Battlebell Rd., Scottsford Police Department.
- WEATHER CONDITIONS:** A section for "SCOTTSFORD" with a "CURRENT RADAR" map showing precipitation intensity in various colors.
- Map:** A map on the left side with various location pins and icons.
- Footer:** Weather forecast for Thursday (61°F, 43°F) and Friday (57°F, 34°F).



REAL-TIME OPERATIONS CENTRE (RTOC): HOW OUR STAFF SUPPORT PUBLIC SAFETY



24/7 MONITORING:

Watch over live information to stay aware of what's happening in the community



FASTER RESPONSE:

Provide officers with real-time updates to help them respond quickly and effectively



IMPROVED SAFETY:

Share critical information that helps keep both the public and officers safe



BETTER COORDINATION:

Connect police units and partner agencies during incidents



SMART USE OF RESOURCES:

Help ensure the right officers and tools are in the right place at the right time



SUPPORTING INVESTIGATIONS:

Gather and organize information that helps solve crimes



SITUATIONAL UPDATES TO COMMAND: HOW WE SUPPORT EXECUTIVE DECISION-MAKING



REAL-TIME AWARENESS:

Keep leadership informed on what's happening as it unfolds



FASTER DECISIONS:

Enable quick, confident executive direction



RISK VISIBILITY:

Identify emerging threats early



COORDINATED RESPONSE:

Ensure alignment across units and partner agencies



CLEAR COMMUNICATION:

Support consistent messaging to the public





The Alliance

1. Coordinated Infrastructure

Coordinate the installation and maintenance of CCTV and ALPR cameras across the region.

2. Efficient Partnerships

Enable more efficient technology deployment and grow community safety year over year.

3. Integrated Data Sharing

Partners can send their own CCTV feeds and alarm notifications directly into the RTOC.

4. Strategic Planning

Collaboratively map out future camera and ALPR locations based on community safety needs.

