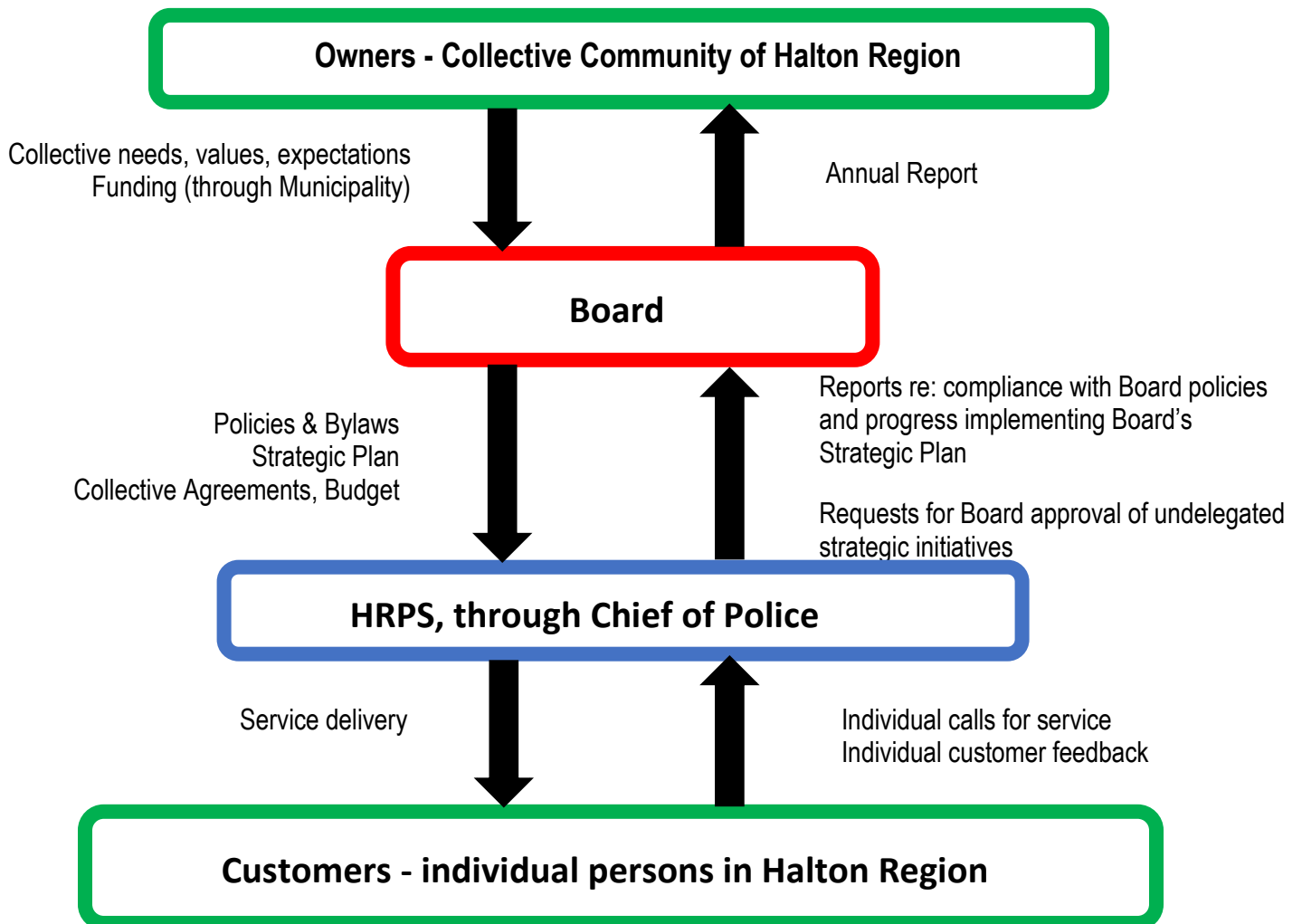




Policy G01 – Governance Commitment

Introduction

1. The Board's relationship with the Service and the Owners of the Service (the collective community of Halton Region) is depicted below.



Commitment

2. The Board is committed to ensuring that policing actions and results in Halton Region are congruent with the needs, values and expectations of the community.

Requirements

3. The Board 's analysis of community **needs** for policing shall be based on:
 - a. statutory imperatives; and
 - b. community safety statistical comparisons to similar jurisdictions and previous timeframes.
4. The Board's analysis of community **values and expectations** shall be based on community feedback and input from stakeholder groups.

Reporting and Evaluation

5. The Board shall ensure that the Service continues to provide exceptional results at appropriate costs, while avoiding or otherwise mitigating unacceptable actions, situations and consequences as described in statues and board policies, by receiving and assessing Service reports, and addressing any gaps by directing Service adjustments and/or revising strategic plan or policy expectations.